

# Volvo Ocean Race at Fan Pier Boston

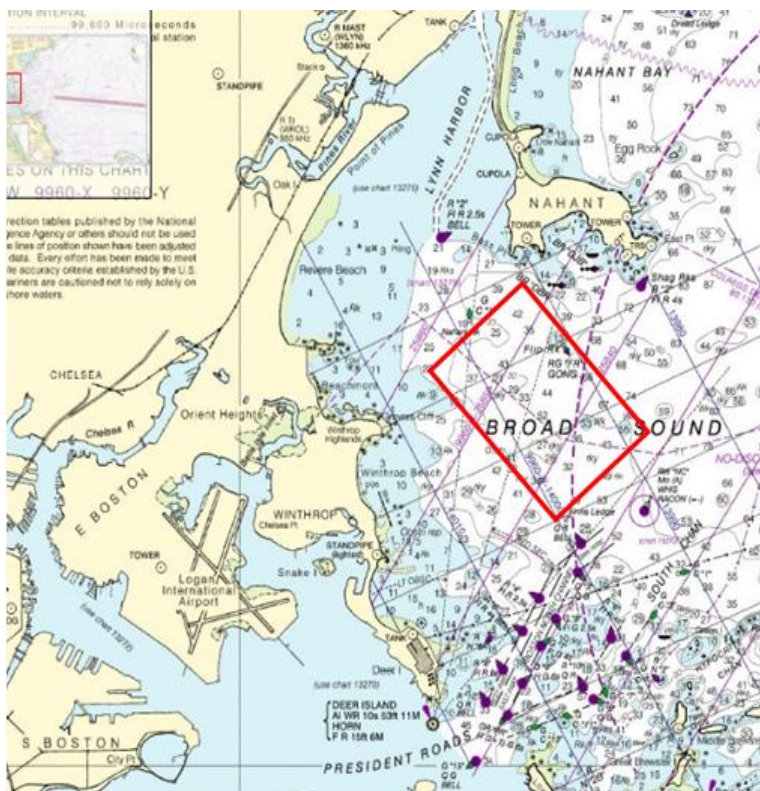
## IN PORT RACES

### Saturday, May 9

QuickTime™ and a decompressor are needed to see this picture.

QuickTime™ and a decompressor are needed to see this picture.

#### IN PORT RACE AREA



**RACE AREA:** Racing will be in Broad Sound just outside of Boston Harbor between Nahant and Winthrop (6 miles from Fan Pier).

#### RACE TIMELINE

- 10:00 - 10:30 Race Committee & Marshal Boats leave dock
- 10:30 - 10:50 Race Boat Departure Ceremony
- 1:00 Scheduled Start of Race #1
- 2:30 Second race start (approximate)
- 3:30 Second race finish (approximate)
- 4:30 Dock Arrival Ceremony (approximate)

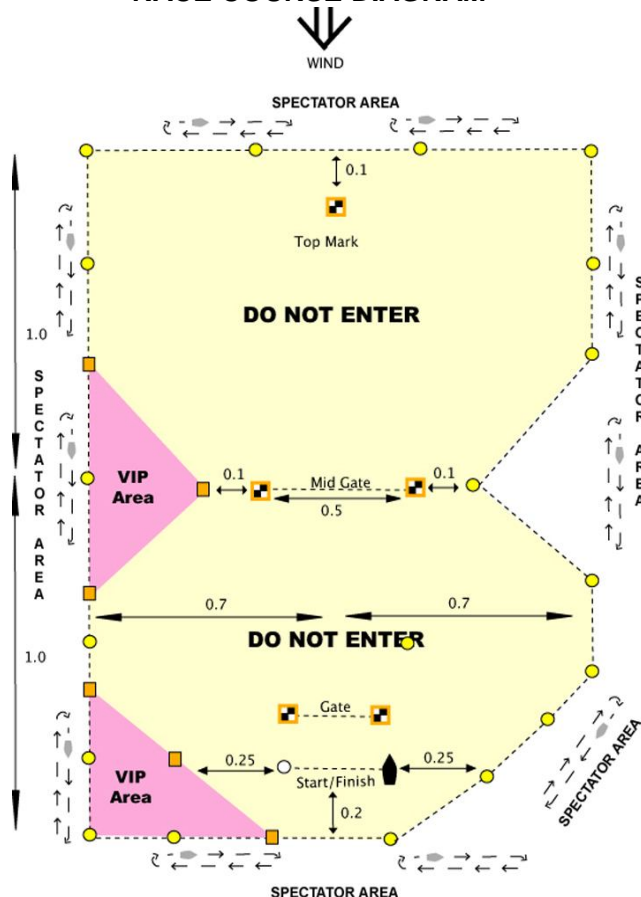
#### RACE COMMUNICATIONS

- VHF 67 Race Commentary (live commentary and safety information)
- VHF 16 Emergency Hailing (keep non distress traffic off this channel)
- VHF 72 Race Management Communications (keep off this channel)

#### RACE COURSE

- See diagram above right for the race course, spectator viewing areas and spectator VIP exclusion areas;
- The yachts will start between the Committee Boat with an orange flag and a white Volvo mark;
- They will sail 4 legs (upwind and downwind) with each leg approximately 2 miles long, rounding 2 black/white/orange marks. They finish back at the starting line;

#### RACE COURSE DIAGRAM



**COURSE:** Start - Mid Gate - Top Mark - Mid Gate - Gate - Mid Gate - Top Mark - Mid Gate - Finish

- The race course axis will depend on the wind direction and may change during and between races;
- The second race will start as soon as possible after the finish of the first race.

#### EXCLUSION ZONES

- The spectator exclusion zones will be bound by orange and yellow inflatable marks;
- Only boats flying official Press, TV, Umpire or Race Official flags are allowed inside the exclusion zone;
- Please follow the instructions of any official marshal boats (red flags);
- Spectator boats may watch the racing from outside the spectator exclusion zones (enforced beginning at 12:00);
- There are 2 VIP race viewing areas reserved for flagged boats only.

#### MISCELLANEOUS

- Observe the Rules of the Road and use common sense;
- Sailboats must keep their sails down in the area adjacent to the spectator exclusion zone.
- Abide by directions of any law enforcement vessels and official flagged boats at all times.