

# VOLVO OCEAN RACE

ROUND THE WORLD 2008-2009

## Leg 10 Addendum: inc Amendment 1

### 1. THE COURSE.

Course 1—(Pennant 1) Sandhamn Start, — Mark 1 to starboard— Start mark to starboard—Svängen to starboard — Revengegrundet to starboard—Sodergrundan to port—Gotska Sandon to port—Finish

Course 2—(Pennant 2) Sandhamn Start, — Mark 1 to starboard— Start mark to starboard— Svängen to starboard — Revengegrundet to starboard— Sodergrundan to port—Finish

(a) In addition to either of the course options an extra lengthening triangle may be added to have the boats arrive at the finish line between 1000 and 1200 local time on the 27<sup>th</sup>. If used the option will be announced prior to any Boat reaching the longitude of 027° 50.000E; the options are described in the Leg 10 Addendum Attachment 1.

(b) In the event the Boats will not finish in time to make the Bridge opening at 1700hrs local time: the Race Committee may use an alternative finish line, the positions and other instructions are contained in Attachment 2.

### 2. THE MARKS

		Approximate Latitude	Approximate Longitude	Description
a.	Sandhamn Start	59° 16.600 N	018° 57.100E	Skip 45 foot motor launch
b.	Start mark			Volvo mark black and white with an orange top
c.	Mark 1	59° 15.250 N	019° 00.700E	Volvo mark black and white with an orange top
d.	Svängen	59° 16.200 N	018° 58.455E	Lighthouse
e.	Revengegrundet	59° 15.050 N	019° 00.780E	Lighthouse
f.	Sodergrundan	59° 14.580 N	019° 03.020E	Navigational buoy
g.	Gotska Sandon	58° 19.200 N	019° 12.850E	Navigational buoy
h.	Kugalaskly Cape	59° 47.100 N	028° 10.400E	Cape
i.	Moschnyy Island	60° 02.000 N	027° 50.000E	Island
j.	Seskar Island	60° 02.000 N	028° 22.000E	Island
k.	Kolganpya Cape	59° 50.800 N	028° 32.800E	Cape

I. Finish buoy	60 <sup>0</sup> 02.400 N	029 <sup>0</sup> 26.630E	Volvo mark black and white with an orange top
m. Finishing Vessel	60 <sup>0</sup> 02.530 N	029 <sup>0</sup> 26.630E	Bravo-12 meter motor launch.

Positions are approximate. Datum: to WGS 84.

### 3. THE START

- (a) The starting line is between the orange flag on the Start Boat at the starboard end and a black, white and orange Volvo mark.
- (b) Individual Recall notification may be broadcast on the VHF Channel 14. Failure of the Race Committee to notify, delay in notification or the sequence of such notification shall not constitute grounds for redress. This amends RRS 62.1.

### 4. THE FINISH LINE

The finish line will be between a staff displaying an orange flag on the finishing vessel and the finishing buoy.

During the hours of darkness the finishing buoy will have identifying strobe lights.

### 5. RADIO COMMUNICATIONS

Radio communications in Russian waters:

- (a) Monitor channel 16 at all times for the Russian Coastguard
- (b) Report on channel 74 St Petersburg Traffic Control when passing 026<sup>0</sup> 30.000E
- (c) Monitor channel 68 Primorsk Northern Fairway Traffic Control when entering northern channel
- (d) Monitor channel 69 Ust-Luga Southern Fairway Traffic Control when entering southern channel

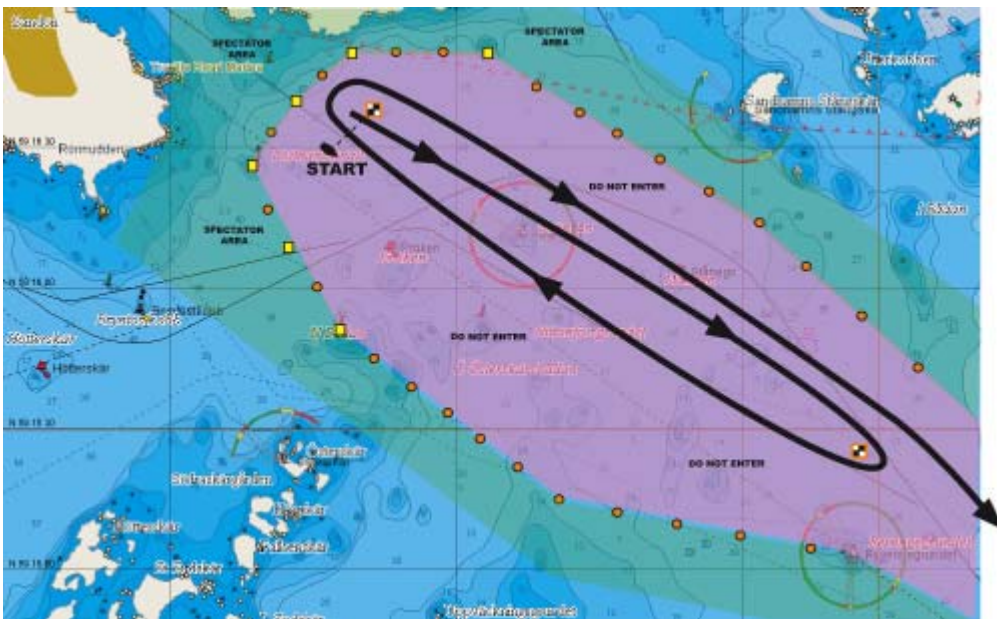
### 6 ST PETERSBURG EXCLUSION

Boats shall leave the line formed by Marks, Kugalaskly Cape, Moschnyy Island, Seskar Island and Kolganpya Cape to starboard. While racing Boats shall not cross a line formed by adjacent Marks.

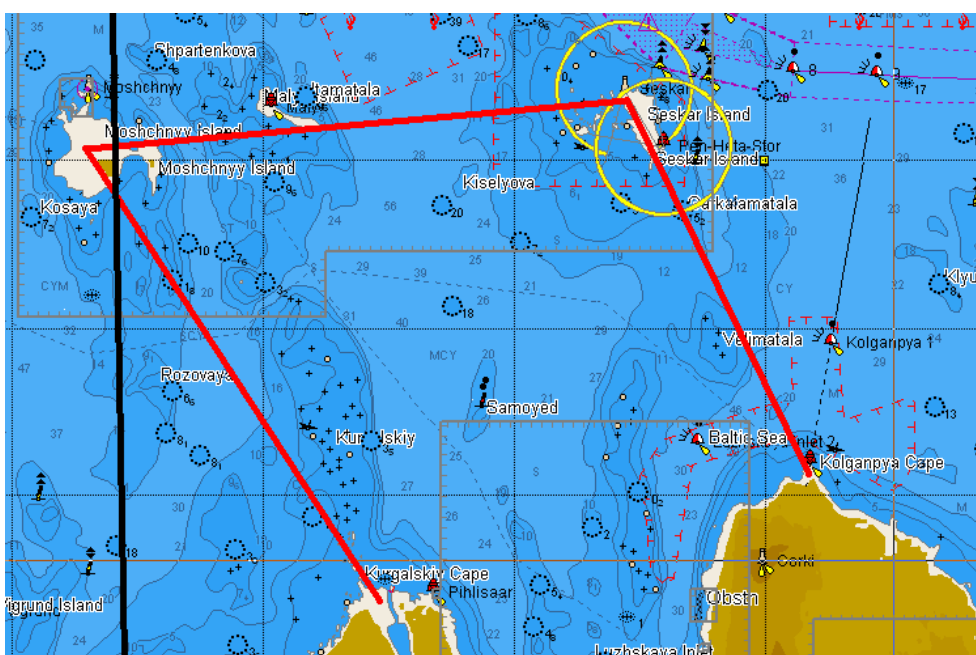
### 7. COURSE DIAGRAMS

In the event of a discrepancy between the diagram and the written word, the written word shall prevail.

#### START



#### ST PETERSBURG EXCLUSION



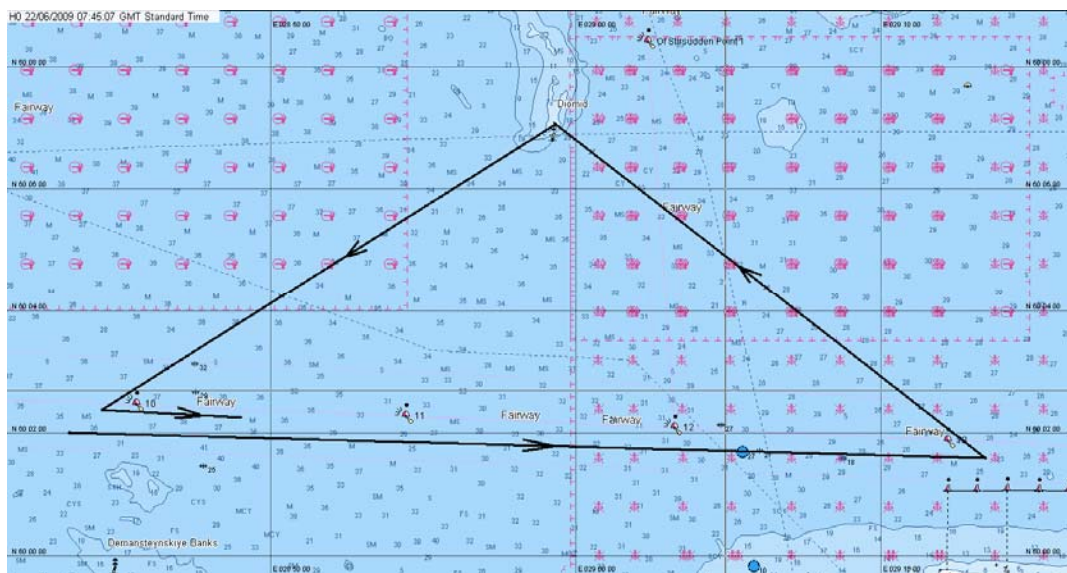
**FINISH**



**END** Jack Lloyd Race Director.

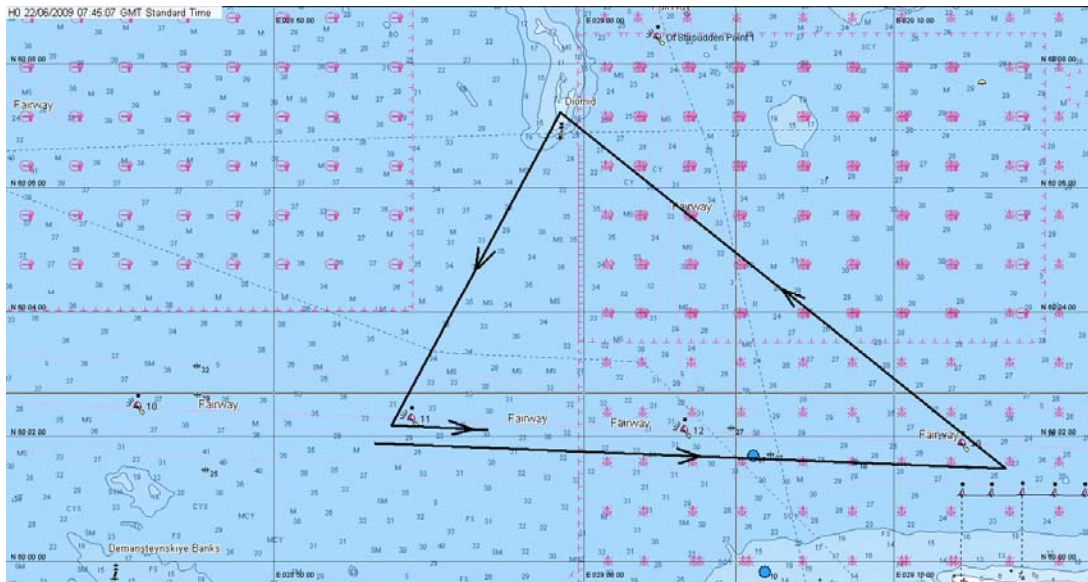
## Attachment 1

Fairway Mark 10	60° 02.400N	028° 45.700E	Navigational buoy
Fairway Mark 11	60° 02.259N	028° 54.461E	Navigational buoy
Fairway Mark 12	60° 02.073 N	029° 03.268E	Navigational buoy
Fairway Mark 13	60° 01.875 N	029° 12.223E	Navigational buoy
Diomid - cardinal Mark	60° 06.783 N	028° 59.237E	Navigational mark



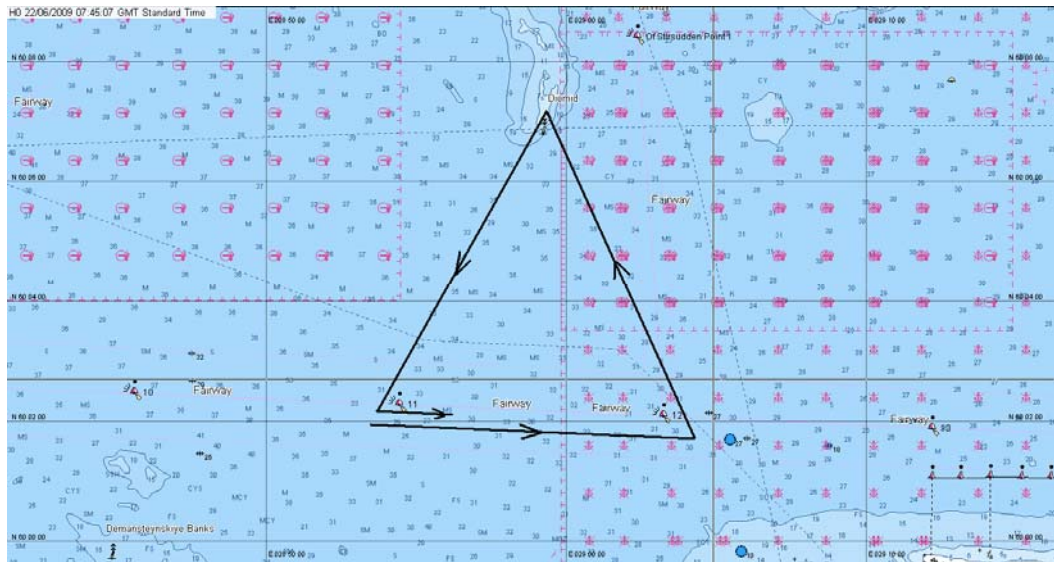
Option A

Mark 10 to port, Mark 13 to port, Cardinal Mark "Diomid" to port, Mark 10 to port, finish approximate length 30nm



Option B.

Mark 11 to port, Mark 13 to port, Cardinal Mark “Diomid” to port Mark 11 to port, finish:  
 approximate distance 21.25nm



Option C

Mark 11 to port, Mark 12 to port, Cardinal Mark “Diomid” to port, Mark 11 to port, finish:  
 Approximate length 14.6nm.

Attachment 2  
ALTERNATE FINISH LINE

In the event the Race Committee uses the Alternate Finish Line: Boats will be notified before the first placed at the time Boat reaches the longitude of 027° 50.000E. Boats shall pass between the two (2) Cardinal Marks listed below from west to east. Finish times may be taken either by the RC boat positioned approximately on the transit of the 2 marks or the Race Management System. As a back up Boats should send a screen grab of their crossing.

Cardinal Mark	60° 02.500N	028° 26.850E	Navigational buoy
Cardinal Mark	60° 03.300N	028° 26.480E	Navigational buoy

After finishing all Boats shall motor to the vicinity of the position 60° 02.400 N 029° 26.630E: where your pilot will be waiting for the trip to the customs jetty.  
END.