

VOLVO OCEAN RACE

ROUND THE WORLD 2008-2009

Leg 10 Addendum

1. THE COURSE.

Course 1—(Pennant 1) Sandhamn Start, — Mark 1 to starboard— Start mark to starboard—Svangen to starboard — Revengegrundet to starboard—Sodergrundan to port—Gotska Sandon to port—Finish

Course 2—(Pennant 2) Sandhamn Start, — Mark 1 to starboard— Start mark to starboard— Svangen to starboard — Revengegrundet to starboard— Sodergrundan to port—Finish

In addition to either of the course options an extra lengthening triangle may be added to have the boats arrive at the finish line between 1000 and 1200 local time on the 27th. If used the option will be announced prior to any Boat reaching the longitude of 027° 50.000E; the options are described in the Leg 10 Addendum Attachment 1.

2. THE MARKS

	Approximate Latitude	Approximate Longitude	Description
a. Sandhamn Start	59° 16.600 N	018° 57.100E	Skip 45 foot motor launch
b. Start mark			Volvo mark black and white with an orange top
c. Mark 1	59° 15.250 N	019° 00.700E	Volvo mark black and white with an orange top
d. Svangen	59° 16.200 N	018° 58.455E	Lighthouse
e. Revengegrundet	59° 15.050 N	019° 00.780E	Lighthouse
f. Sodergrundan	59° 14.580 N	019° 03.020E	Navigational buoy
g. Gotska Sandon	58° 19.200 N	019° 12.850E	Navigational buoy
h. Kugalaskly Cape	59° 47.100 N	028° 10.400E	Cape
i. Moschnyy Island	60° 02.000 N	027° 50.000E	Island
j. Seskar Island	60° 02.000 N	028° 22.000E	Island
k. Kolganpya Cape	59° 50.800 N	028° 32.800E	Cape
l. Finish buoy	60° 02.400 N	029° 26.630E	Volvo mark black and white with an orange top
m. Finishing Vessel	60° 02.530 N	029° 26.630E	Bravo-12 meter motor launch.

Positions are approximate. Datum: to WGS 84.

3. THE START

- (a) The starting line is between the orange flag on the Start Boat at the starboard end and a black, white and orange Volvo mark.
- (b) Individual Recall notification may be broadcast on the VHF Channel 14. Failure of the Race Committee to notify, delay in notification or the sequence of such notification shall not constitute grounds for redress. This amends RRS 62.1.

4. THE FINISH LINE

The finish line will be between a staff displaying an orange flag on the finishing vessel and the finishing buoy.

During the hours of darkness the finishing buoy will have identifying strobe lights.

5. RADIO COMMUNICATIONS

Radio communications in Russian waters:

- (a) Monitor channel 16 at all times for the Russian Coastguard
- (b) Report on channel 74 St Petersburg Traffic Control when passing 026⁰ 30.000E
- (c) Monitor channel 68 Primorsk Northern Fairway Traffic Control when entering northern channel
- (d) Monitor channel 69 Ust-Luga Southern Fairway Traffic Control when entering southern channel

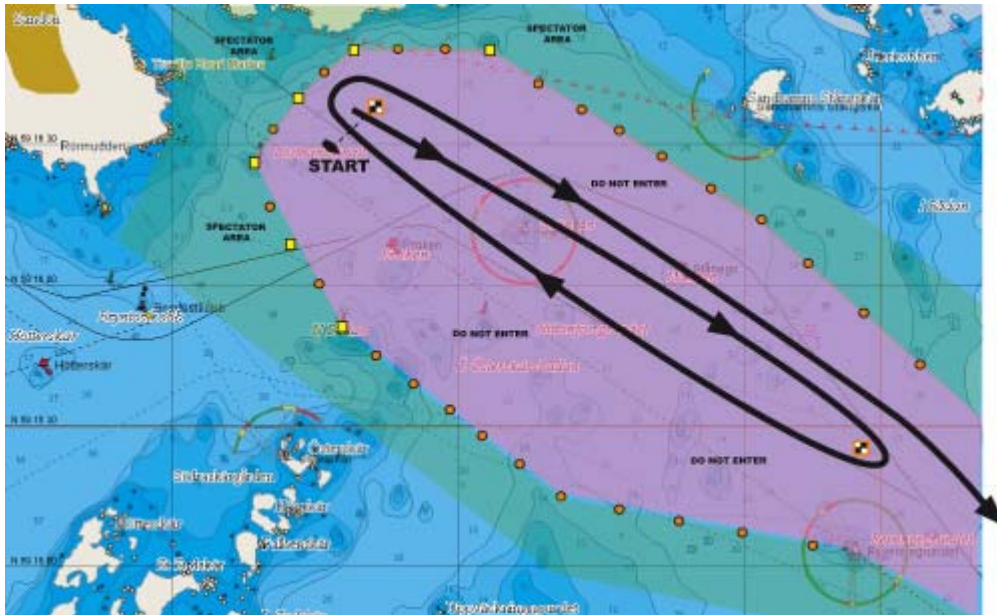
6 ST PETERSBURG EXCLUSION

Boats shall leave the line formed by Marks, Kugalaskly Cape, Moschnyy Island, Seskar Island and Kolganpya Cape to starboard. While racing Boats shall not cross a line formed by adjacent Marks.

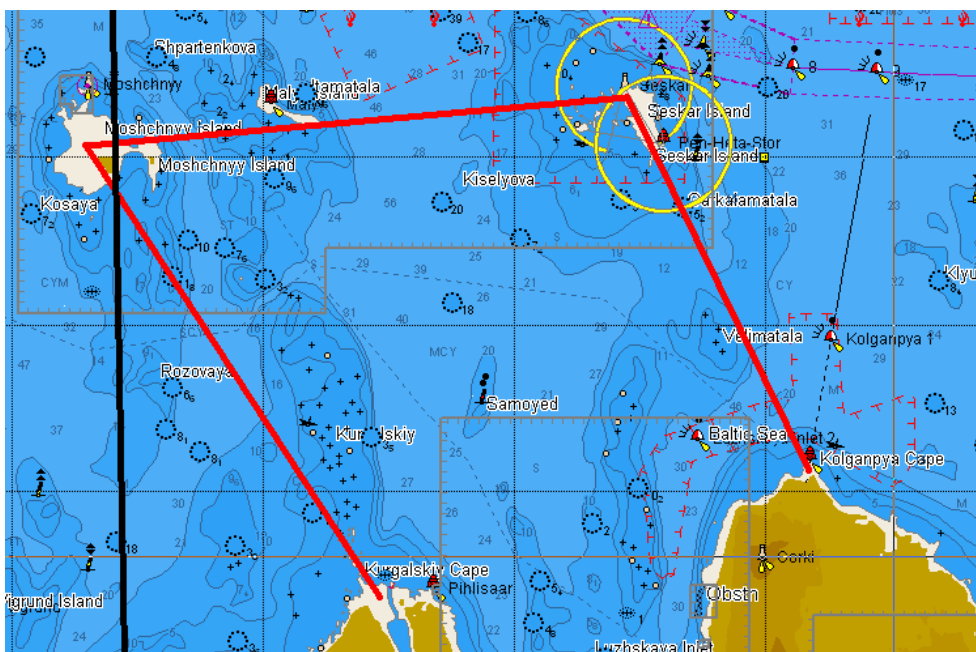
7. COURSE DIAGRAMS

In the event of a discrepancy between the diagram and the written word, the written word shall prevail.

START



ST PETERSBURG EXCLUSION



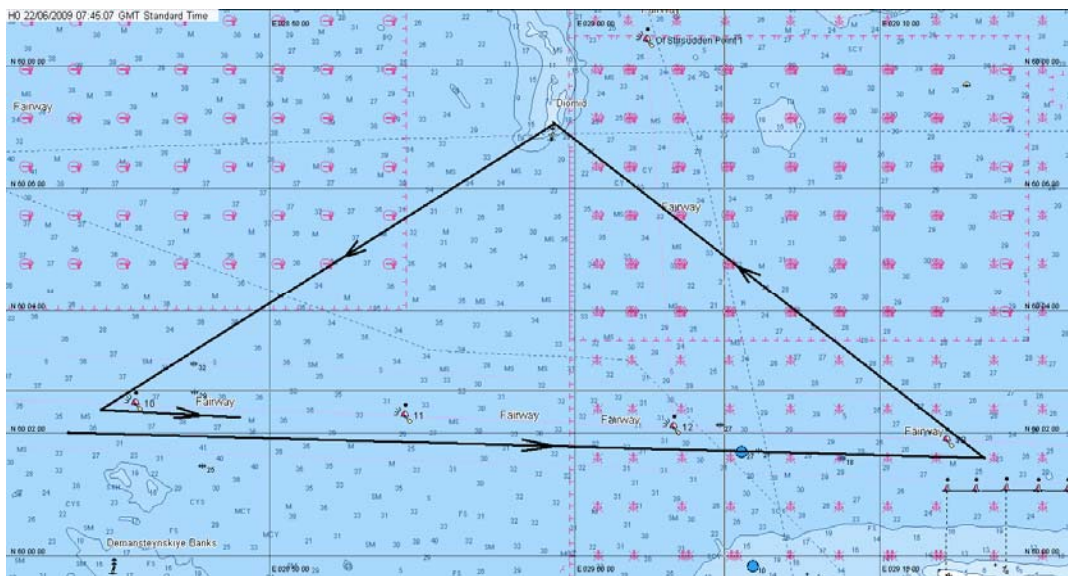
FINISH



END Jack Lloyd Race Director.

Attachment 1

Fairway Mark 10	60° 02.400N	028° 45.700E	Navigational buoy
Fairway Mark 11	60° 02.259N	028° 54.461E	Navigational buoy
Fairway Mark 12	60° 02.073 N	029° 03.268E	Navigational buoy
Fairway Mark 13	60° 01.875 N	029° 12.223E	Navigational buoy
Diomid - cardinal Mark	60° 06.783 N	028° 59.237E	Navigational mark



Option A

Mark 10 to port, Mark 13 to port, Cardinal Mark “Diomid” to port, Mark 10 to port, finish approximate length 30nm



Option B.

Mark 11 to port, Mark 13 to port, Cardinal Mark “Diomid” to port Mark 11 to port, finish:
 approximate distance 21.25nm



Option C

Mark 11 to port, Mark 12 to port, Cardinal Mark “Diomid” to port, Mark 11 to port, finish:
 Approximate length 14.6nm.

END.