

VOLVO OCEAN RACE

ROUND THE WORLD 2008-2009

Leg 7 Addendum

1 THE COURSE.

Course 1-(Pennant 1) Start-Mark 1 to port- Constitution Mark to port- Boston exclusion zone (BEZ) to starboard - Ice Exclusion Zone (IEZ) to port - Aran Island Mark to starboard - Inisheer Island Mark to port - Mutton Island channel Mark to port - Galway finish line.

Course 2-(Pennant 2) Start -, Boston exclusion zone to starboard - Ice Exclusion Zone to port - Aran Island Mark to starboard - Inisheer Island Mark to port - Mutton Island channel Mark to port - Galway finish line.

2. THE MARKS

	Latitude	Longitude	Description
a. Start Fan Pier			Pole with an orange flag
b. Start mark			Volvo mark black and white with an orange top
c. Mark 1	42° 20.670 N	071° 00.920W	Volvo mark black and white with an orange top
d. Constitution mark	42° 22.260 N	071° 02.910W	Volvo mark black and white with an orange top
e. BEZ	42° 28.231'N	067° 10.771'W	No physical mark
f. BEZ	43° 32.053'N -	069° 20.673'W	No physical mark
g. BEZ	42° 35.762'N	070° 28.909'W	No physical mark
h. BEZ	42° 12.000'N	070° 30.000'W	No physical mark
i. BEZ	42° 4.000'N	070° 12.000'W	No physical mark
j. IEZ - 1	46° 55.564'N	55° 56.405'W	Land
k. IEZ - 2	43° 00.000'N	50° 0.000'W	No Physical Mark
l. IEZ - 3	43° 00.000'N	46° 0.000'W	No Physical Mark
m. IEZ - 4	46° 00.000'N	42° 0.000'W	No Physical Mark
n. Aran Island Mark	53° 7.462'N	009° 51.105'W	No Physical Mark
o. Inisheer Island Mark	53° 02.803N	009° 29.097W	No physical mark
p. Mutton Island Channel Mark	53° 15.050N	009° 02.900W	Port Navigation Mark
q. Finish buoy	53° 15.000N	009° 02.750W	Volvo mark black and white with an orange top

r. Finish	53 ⁰ 15.200N	009 ⁰ 03.200W	Pole with an orange flag on shore
-----------	-------------------------	--------------------------	-----------------------------------

Positions are approximate. Datum: to WGS 84.

3. THE START

- (a) The starting line is between the orange flag on Fan Pier at the starboard end and a black, white and orange Volvo mark.
- (b) Individual Recall notification may be broadcast on the VHF Channel 72. Failure of the Race Committee to notify, delay in notification or the sequence of such notification shall not constitute grounds for redress. This amends RRS 62.1.

4. BOSTON and ICE EXCLUSION ZONE'S

- (a) The Boston Exclusion Zone shall be left to Starboard, while racing a boat shall not cross a straight line between adjacent marks.

Note: when a boat not racing that passes through the Northeast U.S. Seasonal Management Areas shall abide by the: Strike Reduction Rule (50 CFR 224.105)
http://www.nero.noaa.gov/shipstrike/doc/compliance_guide.pdf

When a whale is sighted in these areas Boats can call 978 585 8473 or the US Coastguard VHF 16.

Dead Injured or Entangled whales call: Dead; 978 585 7149, Entangled: 800 900 3622 or US Coastguard VHF 16.

- (b) The Ice Exclusion Zone is formed by Marks IEZ 1, 2, 3, 4 and is a great circle line between adjacent marks, starting with Mark 1 and finishing with a line extending north from Mark 4 on Longitude 42W, while racing Boats shall not cross these lines.

5. SCORING GATE

- (a) Leaving Island of New Foundland to port
- (b) Crossing the Longitude 52⁰ 38.000W

6. THE FINISH LINE

The finish line will be between a staff displaying an orange flag positioned next to the lighthouse on Mutton Island and the finishing buoy. Boats shall leave the channel marker at position 53⁰ 15.050N – 009⁰ 02.900W to port.

During the hours of darkness the finishing buoy will have identifying strobe lights.

7. METEOROLOGICAL INFORMATION

Meteorological Information in accordance with NOR 3.12 (d) will be supplied four times per day at 0000, and 1200 UTC GRIBS (GFS and ECMWF, satellite, analysis, Gulf Stream, Ice, txt and QuikSCAT) and at 0600 and 1800 UTC (HR QuikSCAT and satellite image).

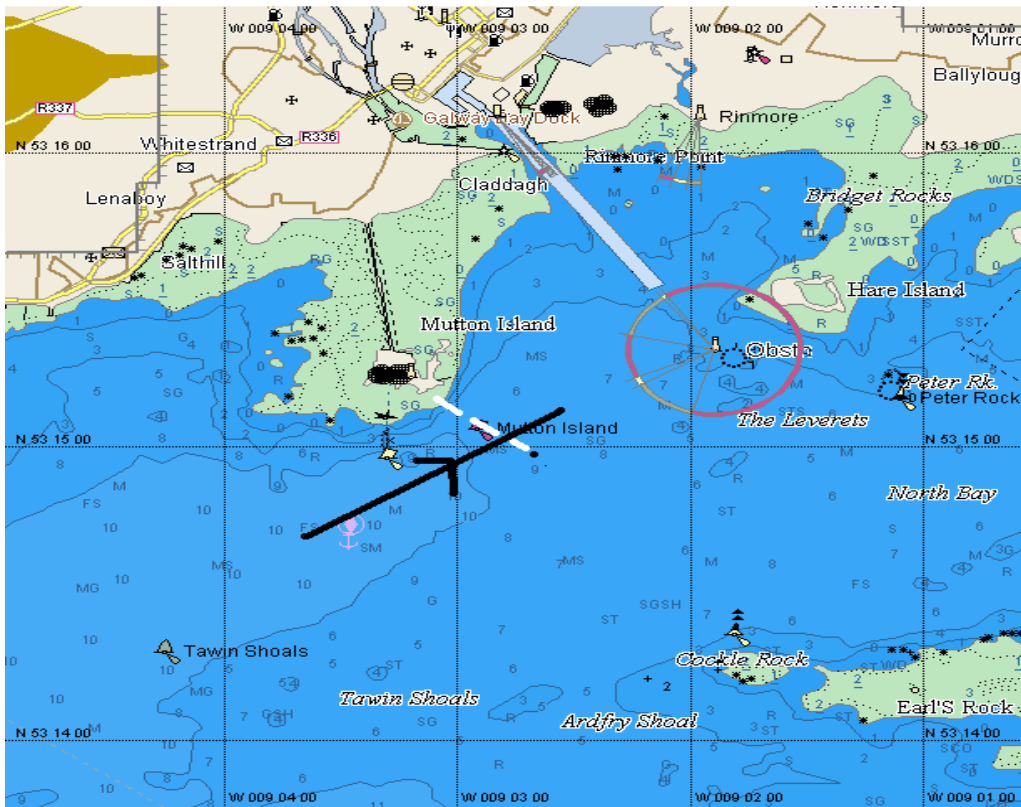
8. COURSE DIAGRAMS

In the event of a discrepancy between the diagram and the written word, the written word shall prevail.

START



FINISH



END Jack Lloyd Race Director.