

VOLVO OCEAN RACE

ROUND THE WORLD 2008 - 2009

Leg 8 Addendum.

1 THE COURSE.

Course 1-(Pennant 1) Start-Mark 1 to port- Start Mark to port – Margareta Mark to port – Fastnet Rock to starboard – Dover Exclusion Zone to port – Rotterdam Exclusion Zone to starboard - Rotterdam Loop - Marstrand finish line.

Course 2-(Pennant 2) Start - Margareta Mark to port – Fastnet Rock to starboard – Dover Exclusion Zone to port – Rotterdam Exclusion Zone to starboard - Rotterdam Loop - Marstrand finish line.

2. THE MARKS

Mark	Approximate Latitude	Approximate Longitude	Description
a. Race Committee Vessel			White 13 meter powerboat "Spare Time"
b. Start mark			Volvo mark black and white with an orange top
c. Mark 1	Course and bearing to be displayed on the Race Committee vessel		Volvo mark black and white with an orange top
d. Margareta Mark	53 ⁰ 13.700 N	009 ⁰ 06.000W	Starboard channel mark
e. Fastnet Rock	51° 23.400N	009° 36.200W	Island
f. Peacehaven	50° 47.500N	000° 00.000	Land
g. Greenwich	50 ⁰ 24.400N	000 ⁰ 00.000	Navigation Mark
h. Bassurelle	50 ⁰ 32.700N	000 ⁰ 57.773E	Navigation Mark
i. Colbart Nord	50 ⁰ 57.414N	001 ⁰ 23.323E	Navigation Mark
j. MPC	51° 06.100N	001° 38.250E	Navigation Mark
k. F1	51° 11.180N	001° 44.965E	Navigation Mark
l. Inter Bank	51° 16.450N	001° 52.266E	Navigation Mark
m. Broad stairs	51° 21.500N	001° 26.750E	Land
n. Maasviakte Light	51° 58.200N	004° 00.800E	Light on land
o. MW5	51° 57.210N	003° 41.980E	Navigation Mark
p. MNW3 - MW6	52° 04.840N	003° 40.970E	Navigation Mark
q. MNW2	52° 07.400N	003° 45.000E	Navigation Mark
r. MN2	52° 07.400N	003° 51.360E	Navigation Mark
s. MN3	52° 07.040N	004° 00.000E	Navigation Mark

t.	Breakwater light	51° 59.650N	004° 02.800E	Light on breakwater
u.	Rotterdam 1	TBA when laid	TBA when laid	Volvo mark black and white with an orange top
v.	Rotterdam RC	TBA when		Swan 70 yacht
w.	Rotterdam 2	TBA when laid	TBA when laid	Volvo mark black and white with an orange top
x.	Marstrand Finish Mark	57° 52.808N	011° 34.974E	Volvo mark black and white with an orange top
y.	Marstrand Finish	57° 52.956N	011° 34.960E	Pole with an orange flag onshore
Alternate finish line positions – to be used when advised by the Race Committee.				
z.	Alternate Finish Mark	57° 53.700N	011° 33.500E	Volvo mark black and white with an orange top
aa.	Alternate Finish	57° 53.430N	011° 33.500E	Pole with an orange flag onshore

Positions are approximate. Datum: to WG 84.

3. THE START

- (a) The starting line is between the orange flag on the Race Committee Vessel “Spare Time” at the starboard end and a black, white and orange Volvo mark.
- (b) Individual Recall notification may be broadcast on the VHF Channel 06. Failure of the Race Committee to notify, delay in notification or the sequence of such notification shall not constitute grounds for redress. This amends RRS 62.1.

4. DOVER TSS AND ROTTERDAM EXCLUSION ZONE

- (a) Dover Exclusion Zone: Boats shall leave the line formed by Marks, Peacehaven, Greenwich, Bassurelle, Colbart Nord, MPC, F1, Inter Bank and Broadstairs to port; while racing Boats shall not cross a great circle line formed by adjacent Marks.
- (b) Rotterdam Exclusion Zone: Boats shall leave the line formed by Marks, Maasviakte Light, MW5, MNW3-MW6, MNW2, MN2 and MN3 and Breakwater Light to starboard; while racing Boats shall not cross a great circle line formed by adjacent Marks.

5. ROTTERDAM LOOP

Boats will be notified via the Duty Officer of the coordinates for the Marks – Rotterdam RC and Rotterdam 1 and 2 no later than when the first boat is 20nm from the Rotterdam exclusion zone.

Boats shall leave Rotterdam (RM) 1 to port, passing between RM1 and Rotterdam RC (RC) – RM2 to port – RM1 to starboard passing between RM1 and RC.

6. SUSPENSION OF RACING - LIMIT LINE

Refer: Leg Sailing Instruction 20.

7. THE FINISH LINE

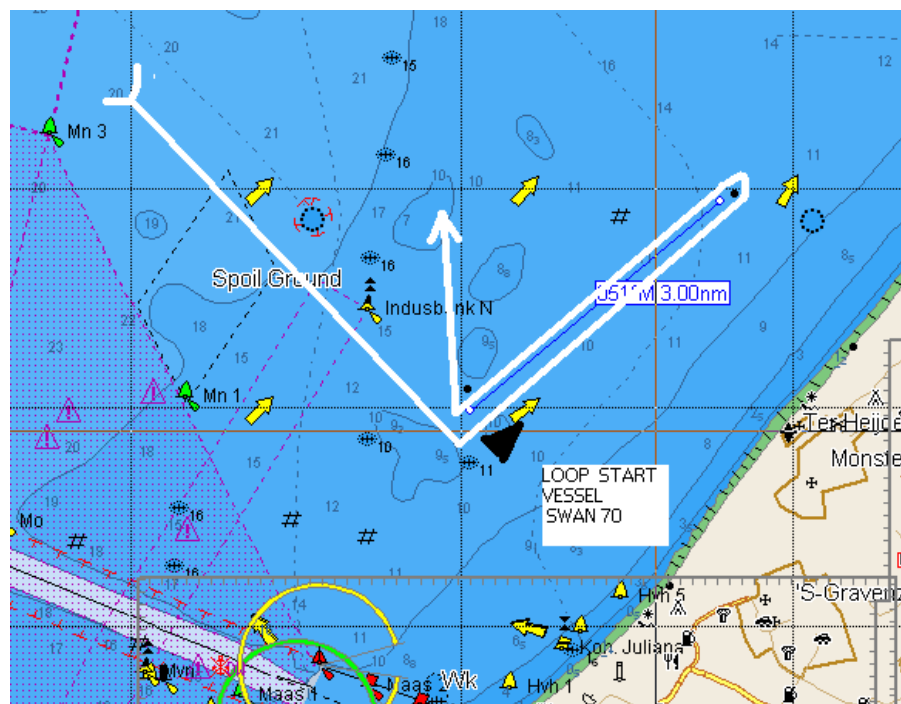
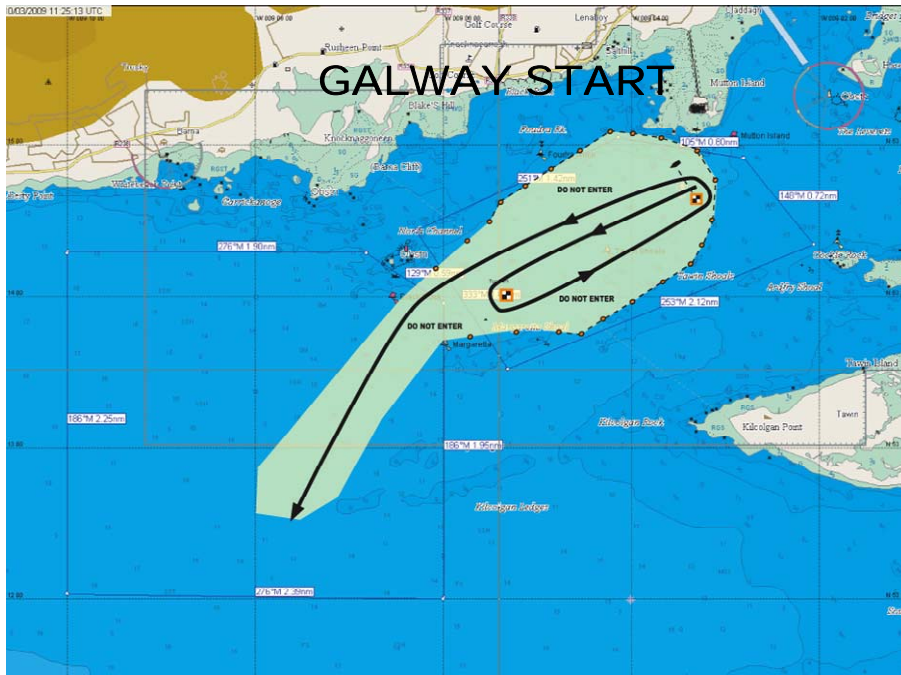
The finish line will be between a staff displaying an orange flag positioned on the foreshore and the finishing buoy.

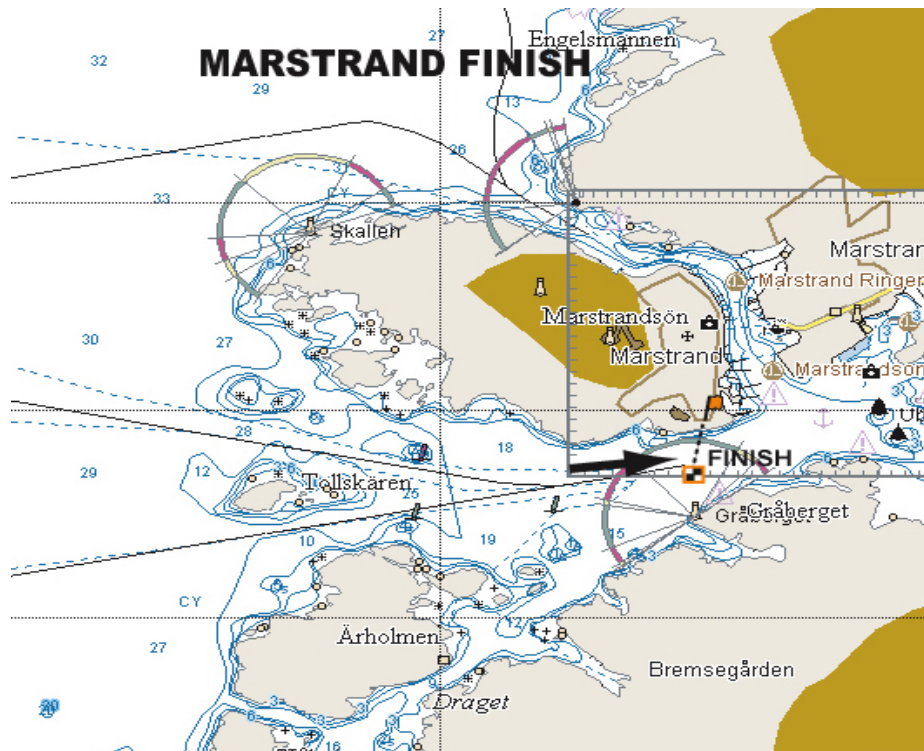
During the hours of darkness the finishing buoy will have identifying strobe lights.

8. COURSE DIAGRAMS

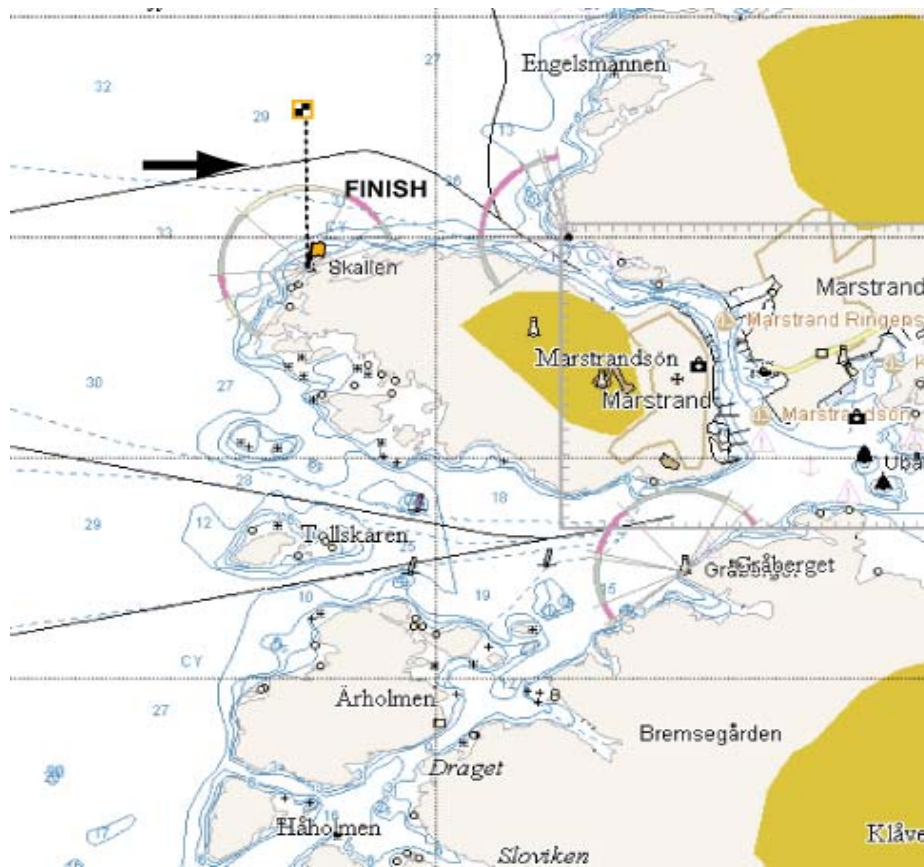
In the event of a discrepancy between the diagram and the written word, the written word shall prevail.

START





ALTERNATE FINISH



END Jack Lloyd Race Director.