

VOLVO OCEAN RACE

ROUND THE WORLD 2008-2009

Leg 9 Addendum: Inc Amendment 1

1 THE COURSE.

Course 1—(Pennant 1) Start—through mid course gate—Mark 1 to port—through mid course gate—Start mark to starboard—through Oresund Sound—Skanor to port--Oland to port—Almagrundet to port—Revengegrundet to port—Svangen to port—Sandhamn finish.

Course 2—(Pennant 2) Start— through Oresund Sound—Skanor to port--Oland to port—Almagrundet to port—Revengegrundet to port—Svangen to port— Sandhamn finish.

2. THE MARKS

	Approximate Latitude	Approximate Longitude	Description
a. Start boat	57 ⁰ 53.850 N	011 ⁰ 33.700E	43 foot motorboat with fly bridge
b. Start mark			Volvo mark black and white with an orange top
c. Mid Course Gate port mark	57 ⁰ 53.430 N	011 ⁰ 31.000E	Volvo mark black and white with an orange top
d. Mid Course Gate starboard mark	57 ⁰ 53.930 N	011 ⁰ 31.000E	Volvo mark black and white with an orange top
e. Mark 1	57 ⁰ 53.700 N	011 ⁰ 28.500E	Volvo mark black and white with an orange top
f. Skanor	55 ⁰ 25.000 N	012 ⁰ 49.750E	Headland
g. Oland	56 ⁰ 39.000 N	016 ⁰ 37.000E	Island
h. Almagrundet	59 ⁰ 09.295 N	019 ⁰ 07.575E	Lighthouse
i. Revengegrundet	59 ⁰ 15.050 N	019 ⁰ 00.780E	Lighthouse
j. Svangen	59 ⁰ 16.200 N	018 ⁰ 58.455E	Lighthouse
k. Finish buoy	59 ⁰ 16.815N	018 ⁰ 56.180E	Volvo mark black and white with an orange top
l. Finish	59 ⁰ 16.970N	018 ⁰ 56.400E	Pole with an orange flag on shore

Positions are approximate. Datum: to WGS 84.

3. THE START

- (a) The starting line is between the orange flag on the Start Boat at the starboard end and a black, white and orange Volvo mark.
- (b) Individual Recall notification may be broadcast on the VHF Channel 74. Failure of the Race Committee to notify, delay in notification or the sequence of such notification shall not constitute grounds for redress. This amends RRS 62.1.

4. THE FINISH LINE

The finish line will be between a staff displaying an orange flag positioned on shore and the finishing buoy.

During the hours of darkness the finishing buoy will have identifying strobe lights.

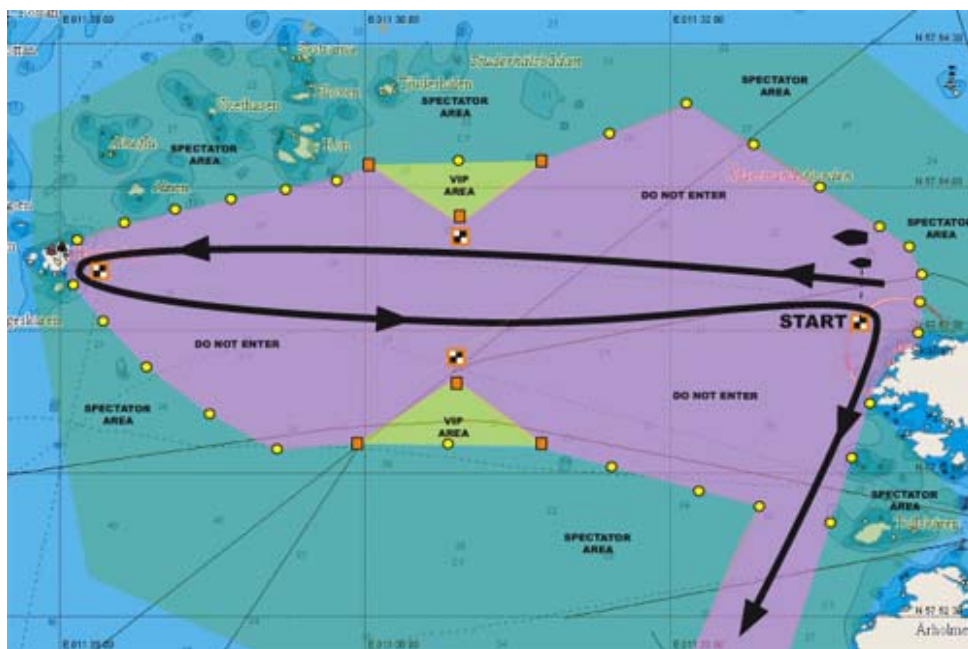
5 SEALING

Seals will not be physically checked at the finish. After you finish we would like you to film (video) the propeller seal and keep the video running through to the GPS. The video and other seals will be checked when the boat is at its mooring

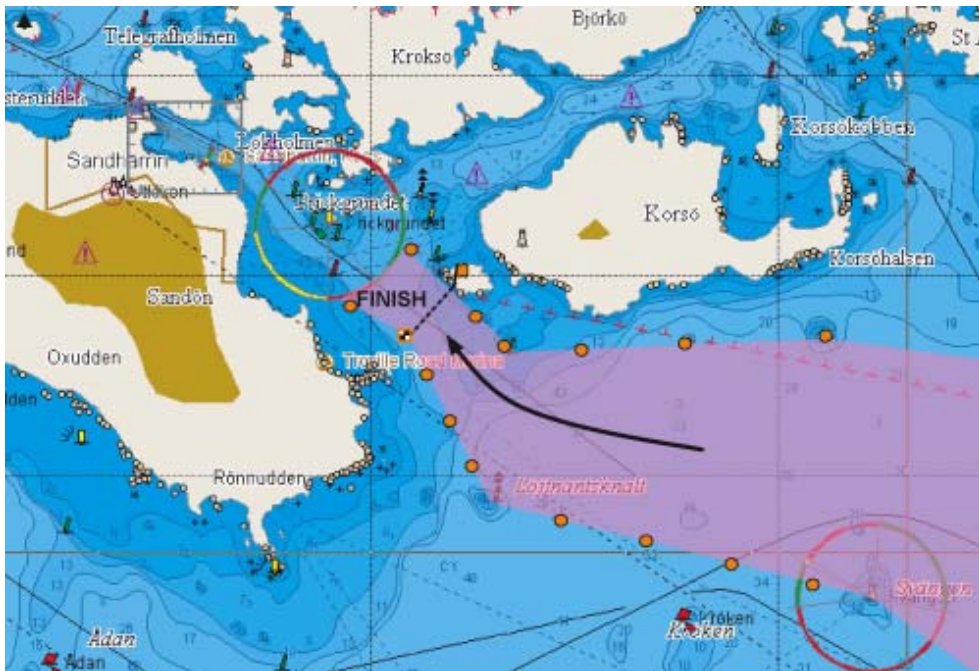
6. COURSE DIAGRAMS

In the event of a discrepancy between the diagram and the written word, the written word shall prevail.

START



FINISH



END

Jack Lloyd Race Director.