

# VOLVO OCEAN RACE

ROUND THE WORLD 2008-2009

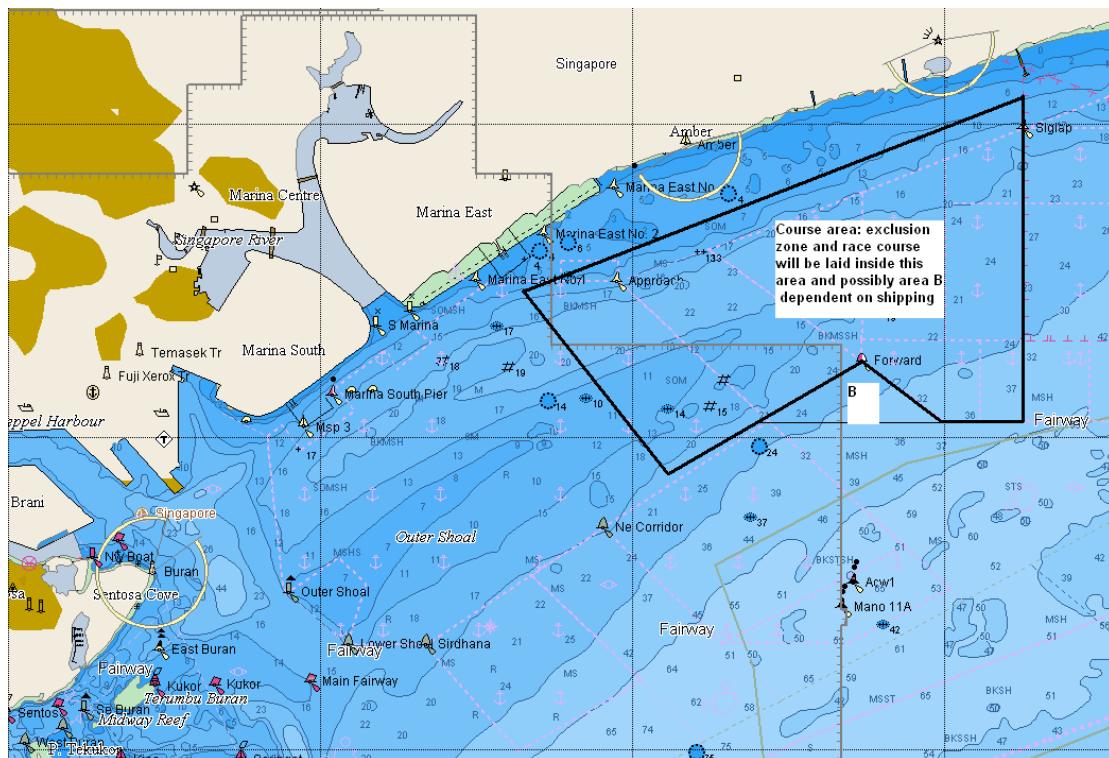
Singapore In-port and Pro Am Race Days – information sheet  
Saturday 10<sup>th</sup> & Sunday 11<sup>th</sup> January 2009

Start times:  
In Port Race 1300hrs 10<sup>th</sup> January  
Pro Am 1200hrs 11<sup>th</sup> January

The yachts will leave the berths at One<sup>0</sup> 15 Marina Sentosa Island between 1030 and 1100 hrs.

## Race Area

The races will take place within the area shown on the attached chart.



The start line will be between a white Volvo buoy and the start boat flying an orange flag.



1



# VOLVO OCEAN RACE

ROUND THE WORLD 2008 - 2009

## Exclusion Zone

- The Exclusion Zone will be bounded by yellow and/or orange marks (diagram on the next page, exact size and shape will be determined by the wind strength and wind direction).
- The Exclusion Zone will be In-force from 1200
- Please follow any directions that the Marshall boats give. They will be flying red Volvo Ocean Race flags
- Only boats flying official Press, TV, Umpire or Race Official flags are allowed inside the Exclusion Zones.
- Only boats flying light blue Volvo Ocean Race VIP flags will be allowed inside the VIP areas.
- Once started the yachts have the potential to sail at speeds in excess of 30 knots, if approached by a yacht, stop and let the boat sail around you.
- Spectator boats are advised to anchor outside the exclusion zone and listen to VHF Channel 09 for race commentary and updates on proposed start times.
- **KEEP YOUR DISTANCE FROM RACE BOATS AT ALL TIMES**

## Race Communications

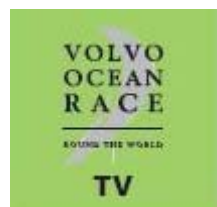
VHF 81 – 82 Race Management Communication – please do not use these channels

VHF 16 Calling and Distress Channel – for emergency use only

VHF 09 Live Broadcast – Official Race Commentary – general information about the predicted start times course changes etc.

[www.volvoceanrace.org](http://www.volvoceanrace.org)

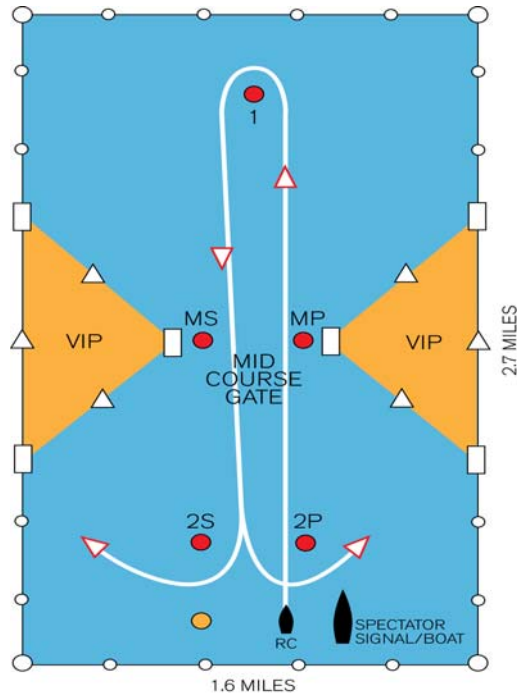
Only Volvo Open 70 Yachts and vessels displaying one of these flags are permitted inside the Exclusion Zone



# VOLVO OCEAN RACE

ROUND THE WORLD 2008-2009

## Exclusion Zone.



## Course Orientation

The course will be orientated so that mark 1 and 2S and 2P lie directly upwind/downwind of each other. If the wind changes direction during the course of the race, marks can be moved to maintain the integrity of the racing. The race marks are normally 2.5 m high cube shaped, white black and orange inflatable markers with Volvo-UBS signage.